



## William Rushbrooke House , London, SE16 3YB

### £300,000 Leasehold



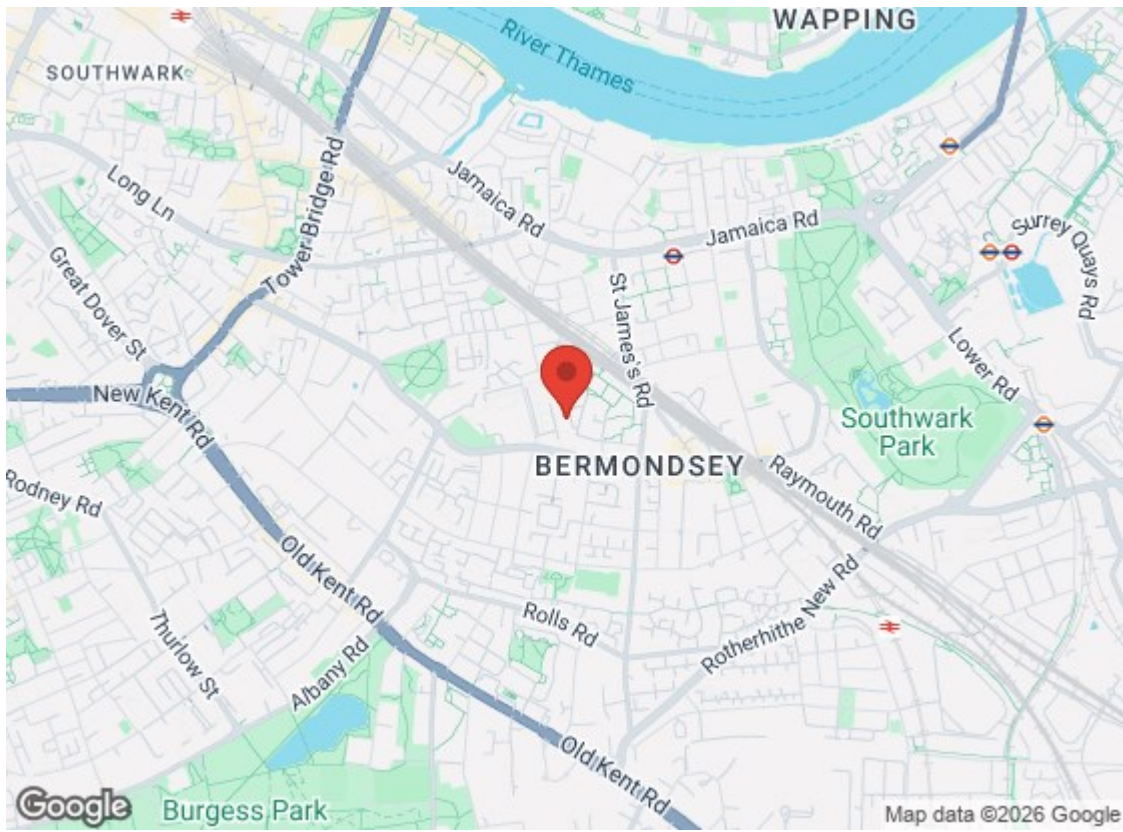
Nestled within the desirable Eveline Lowe Estate in London, this charming flat presents an excellent opportunity for those seeking a comfortable and convenient living space. The property boasts a bright and spacious reception room, perfect for relaxation or entertaining guests. With two well-proportioned bedrooms, it offers ample space for families, couples, or individuals looking for a serene retreat.

Residents of this estate benefit from access to communal gardens, providing a lovely outdoor space to unwind or enjoy leisurely strolls. The location is particularly advantageous, as it is within easy reach of Bermondsey, South Bermondsey, and Surrey Quays, offering a variety of local amenities, schools, and excellent transport links.

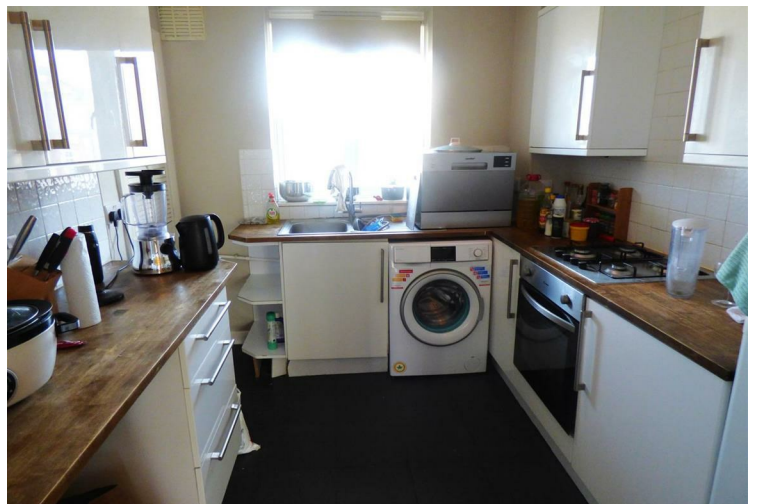
- One bedroom apartment
- Small block
- Private balcony
- Located close to transport & shopping facilities
- No onward chain

#### Viewing

Please contact our Oppida Estates Ltd Office on 0207 232 2222 if you wish to arrange a viewing appointment for this property or require further information.



Energy Efficiency Rating		Current	Potential
Very energy efficient - lower running costs			
(92 plus)	A		
(81-91)	B		
(69-80)	C		
(55-68)	D		
(39-54)	E		
(21-38)	F		
(1-20)	G		
Not energy efficient - higher running costs			
<b>England &amp; Wales</b>			EU Directive 2002/91/EC



These particulars, whilst believed to be accurate are set out as a general outline only for guidance and do not constitute any part of an offer or contract. Intending purchasers should not rely on them as statements of representation of fact, but must satisfy themselves by inspection or otherwise as to their accuracy. No person in this firm's employment has the authority to make or give any representation or warranty in respect of the property.

202 Jamaica Road, London, SE16 4RT  
 T: 0207 232 2222 | F: 020 7232 2112  
 E: sales@oppida.com  
 www.oppida.com